



Yeomans Way, Pilgrims Retreat

, Harrietsham ME17 1FW

- Well-presented 2 bedroom detached park home with en-suite shower room
- Over 50's age restriction
- Stunning rural views
- Fully Furnished
- Off road parking
- On site swimming pool and gym
- 3D VIRTUAL TOUR AVAILABLE ON REQUEST

£175,000 Freehold

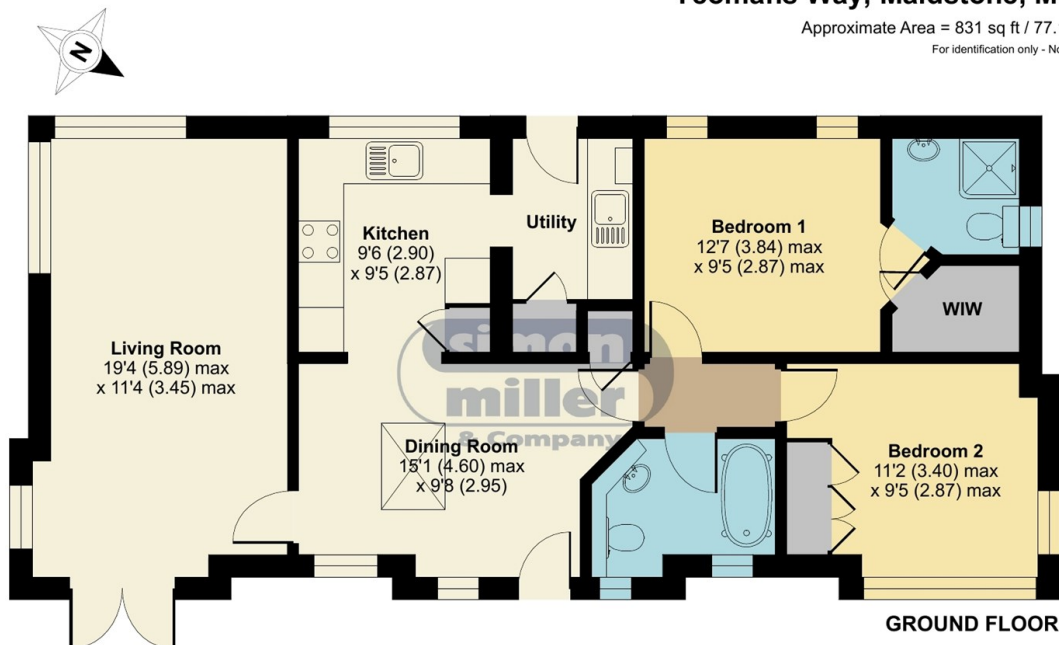


Local Authority Maidstone
Borough Council
Council Tax Band B
EPC Rating

Yeomans Way, Maidstone, ME17

Approximate Area = 831 sq ft / 77.1 sq m

For identification only - Not to scale



Floor plan produced in accordance with RICS Property Measurement Standards incorporating International Property Measurement Standards (IPMS2 Residential). © nichecom 2022. Produced for Simon Miller & Company. REF: 764017

Maidstone & The Weald Office

11 Colman House, Colman Parade, King
Street, Maidstone, Kent, ME14 1DN

Contact

01622 691255
maidstonesales@simonmiller.co.uk

Agents Note: Whilst every care has been taken to prepare these particulars, they are for guidance purposes only. All measurements are approximate and for general guidance purposes only and whilst every care has been taken to ensure accuracy, they should not be relied upon and potential buyers/tenants are advised to recheck the measurements.

